

DSX Specifications

Dimensions

	Metric	Non-Metric
Width :	<1060 mm	42"
Depth:	<910 mm	36"
Height:	<800 mm	32"
Footprint:	<1060 x 610 mm	42" x 24"
Bench Weight:	136 kg (max.)	300 lbs (max.)
Ship Weight:	244 kg (max.)	537 lbs (max.)

Power Supply Requirements

Voltage:	100 – 240V automatic conversion
Frequency:	50/60Hz
Power consumption:	<800 VA "on-line" UPS recommended

Reader Specifications

Photometric Range:	0.000 to 3.000 OD
Spectral Range:	405nm to 690nm
Precision:	±0.010 OD at 0.000 to 0.500 OD <1% CV at 0.501 to 2.000 OD <1.5% at 2.001 to 2.500 OD
Linearity:	±1% at 0.000 to 2.500 OD ≤1.5% at >2.500 OD
Accuracy:	±0.01 OD or 2.5% (0.000 to 3.000 OD) whichever is greater
Read Time:	<10 seconds, single wavelength* <20 seconds, dual wavelength*

Washer Specifications

Manifold configuration:	8-way wash head
Programmable volumes:	50 – 999 µl
Wash containers:	4 wash bottles at 2.0 L, with level-sensing
Waste Container:	8 L with waste full sensor
Residual wash volume:	<3 µl per well with dual-axis sweep in a flat-bottom plate
Dispense precision:	≤5% CV (with 300 µl in a 96 well plate)

Incubator Specifications

Number of incubators:	Up to 4
Temperature range:	RT + 7°C to 50° C
Temperature Accuracy:	± 1° C
Shaking:	>15 Hz periodic or continuous

Pipetting Specifications

Number of plates:	4
Number of assays:	1 assay per strip or up to 12 assays per plate
Number of sample tubes:	96
Number of reagents:	24
Number of standard/control bottles:	33
Number of pipettes:	1

Sample Pipetting

Sample tip size:	300 µl
Sample pipetting volume:	5 – 250 µl 5 – 250 µl single shot mode 25 – 100 µl multi-shot
Estimated cycle time for sample pickup to delivery on plate:	<8 seconds^
Time to dispense:	15 minutes (typical)^ 50 µl of 96 samples to plate from sample tubes or deep well plates
Sampling time w/dilutions:	<26 minutes (typical)^ Example: 2 stage dilution, 20 µl sample to 400 µl buffer in <26 minutes
Single-shot sample pipetting precision:	≤3% CV at any operating volume above 10 µl
Single-shot sample pipetting accuracy:	±2% of target volume at any operating volume above 10 µl *
Dilution range:	1 part in 190 one-stage dilution, 1 part in 36,100 two stage dilution
Number of sample tips loaded:	4 racks of 108
Sample tube dimensions:	12 – 16 mm diameter external dimension, 55 – 100 mm depth

Reagent Pipetting

Reagent tip size :	1300 µl
Number of reagent tips:	41
Reagent pipetting volume:	25 – 1000 µl
Reagent pipetting precision:	≤3% CV at 10 shots at any volume in operating range above 25 µl
Reagent pipetting accuracy:	±2% of target volume in operating range (single shot mode)

DYNEX
MAGELLAN BIOSCIENCES

DYNEX Technologies, Inc.
14340 Sullyfield Circle, Chantilly, VA 20151-1621
TEL 800.288.2354 / 703.631.7800 FAX 703.803.1441
customerservice@dynextechnologies.com
www.dynextechnologies.com



DYNEX Technologies Limited
Columbia House, Columbia Drive
Worthing
West Sussex BN13 3HD UK
TEL: +44 (0) 1903 267555
FAX: +44 (0) 1903 267722
E-Mail: dynexuk@btconnect.com

DSX and Revelation are trademarks of DYNEX Technologies, Inc. All other trademarks and registered trademarks belong to their respective owners.

95000010 DSX
Rev. 01-12-07

Absorbance



Luminescence



Plate Washing



Automated Processing



Software



Consumables



Experts In Microplate Analysis

DYNEX
MAGELLAN BIOSCIENCES

Contact DYNEX Technologies, Inc.
for additional information and
a product demonstration at
800-288-2354 703-631-7800

Specifications are subject to change without notice. *Measured reading time is an average depending upon run conditions. ^Typical pipetting time is an average. For any given system, the result may vary, either shorter or longer than 15 minutes. *Factory calibration and verification of the pipette module are carried out using a calibration fluid. It is the user's responsibility to perform the validation studies necessary to assure proper assay performance.

DSX™ Automated System



The leading light in microplate automation.

The DSX is a fully automated 4-plate processing system capable of performing multiple assays per plate. The DSX employs a modular design that provides flexible configuration, and has been developed with ease of use in mind. The DSX incorporates many features to ensure the quality and security of results, and has the performance to handle a wide variety of assays. Simply put, the DSX offers flexible and reliable sample-in/result-out processing for true walk-away automation.

Modularity

The DSX modular design facilitates upgrades, repairs and reconfiguration. Each module can be installed and removed quickly and easily. The following modules are available for the DSX:

- Reader
- Washer
- Incubators (space for 4)
- Sample ID
- Ambient Drawer
- Electronics Pod (standard)

Modularity provides:

Simple upgrades. As your needs grow, the DSX can be easily upgraded by sliding a new module into an already existing position. The DSX software automatically recognizes the new module.

Simple repairs. To keep your critical assays running, DYNEX offers rapid global service turn around. You save both time and money with rapid repairs that do not require a service technician. All it takes is:

- Calling DYNEX for a replacement module.
- DYNEX will ship the module by express service when possible.
- Replacing the module in minutes.



The DSX modular design simplifies upgrades and repairs.

Ease of Use

The DSX is simple to install, simple to set up and simple to use. Installation, programming, assay set up and daily maintenance are all designed to keep you focused on your results, not on the instrument.

- **Installation.** The DSX can be installed in less than an hour.
- **Software.** Revelation™ data analysis software offers a graphical user interface with intuitive Windows® based operation. The following advanced features facilitate running assays:
 - The Data Reduction Wizard simplifies programming even complex assay configurations and calculations.
 - On-line Help is available at all steps of setting up or programming your assays.
- **Worklist Set Up.** The Worklist Load Wizard walks you through setting up the DSX work list, showing graphically where to place your reagents, samples and plates at the beginning of each run.



The DSX simplifies workload setup by walking you through where to load consumables and samples

- **Maintenance.** You can complete daily maintenance in less than five minutes, including removal of consumables and rinsing the washer.



The DSX robotic arm moves microplates and pipettes all sample and reagents.



Assay Performance

Pipetting Precision. The pipette uses disposable tips to ensure zero carry over. Pipette precision and accuracy:

	Precision (relative to SD)	Accuracy (delivered volume within 2% nominal)
Sample tip	<3% @ 10 µl	± 2% @ 10 µl accuracy
Reagent tip	<3% @ 50 µl	± 2% @ 50 µl accuracy

Rapid pipetting speed minimizes assay drift, ensuring consistent results across the plate and plate to plate.

Consistent Washing. The washer module gives consistent results and lowers overall CVs. Several user-definable options provide significant programming flexibility:

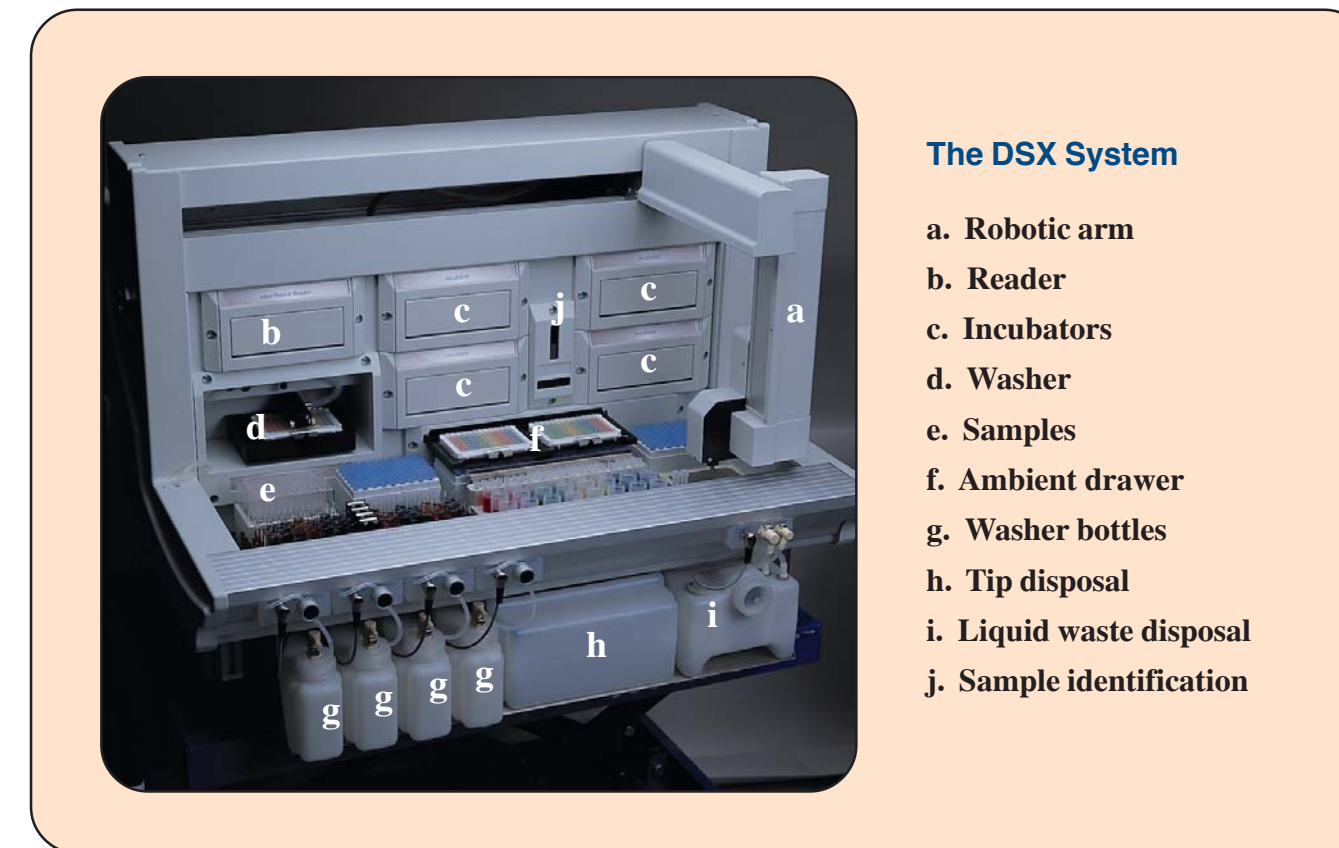
- Plate-specific height settings
- Super Sweep mode aspirates liquid in both the X- and Y-axis of plate wells to leave minimal residual volume.
- Well-bottom washing lowers the dispensers to “clean” the base of each well more vigorously.
- Critical washer timing can mimic manual wash steps.

Environmental Control. The dark cover extends over entire work area of the DSX, locking in place during operation. This cover:

- Protects samples, reagents and reactions from exposure to common environmental contaminants such as light, dust or alkaline phosphatase.
- Eliminates assay interruptions for placing or removing light-sensitive reagents.
- Contains any potential washer aerosols.



The dark cover protects your reagents and reactions from environmental contaminants, securely locking during the entire assay run.



The DSX System

- a. Robotic arm
- b. Reader
- c. Incubators
- d. Washer
- e. Samples
- f. Ambient drawer
- g. Washer bottles
- h. Tip disposal
- i. Liquid waste disposal
- j. Sample identification

QC Features / Process Security

Revelation™ Software. Revelation offers powerful QC equations that monitor daily assays. Revelation incorporates Levey-Jennings statistical analysis, as part of the onboard comprehensive QC monitoring of assay performance.

LIMS Interface. The LIS-Link application is an optional software package that can be installed on the DSX PC. The LIS-Link application allows the DSX to communicate with the laboratory host computer to download pending test orders and to upload completed assay results.

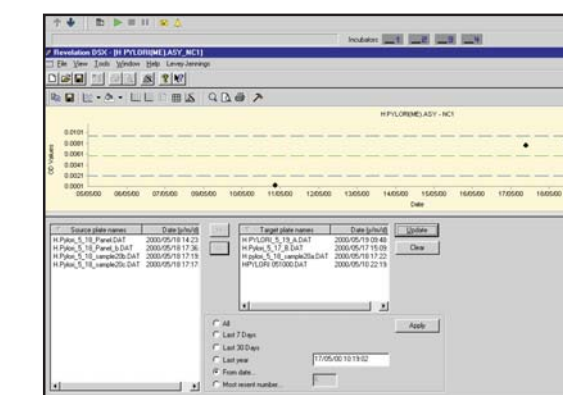
Learned error recovery. To support walk-away automation, you can train the DSX to perform appropriate error recovery actions if an error condition is detected.

Cover Lock. The dark cover locks automatically when the DSX begins to run, protecting reagents from room light and protecting both samples and reagents from interference.

Sample Identification. An on-board barcode reader tracks samples and plates in process.

Alarms. “Wash buffer low” and “waste full” alarms.

Pipette Security. Fluid level sensing, tip detection, tip-ejection and clot detection functions protect your assay as well as the DSX robotic pipette.



Revelation software incorporates Levey-Jennings statistical analysis.